

# Access Bits



## Invest in Minnesota

The following is a portion of an article from the [www.investinmn.org](http://www.investinmn.org) website.

### Minnesota's Future is at Stake.

#### **Impact of Cuts to Services for People with Disabilities.**

A cuts-only approach to meeting Minnesota's needs will jeopardize the independence of people with disabilities.

**Proposed Cut:** The MN House and Senate propose various spending freezes and enrollment caps for disability waiver programs, which will impact disability services.

**Consequence:** Eighteen-year-old Koty has profound nonverbal autism and epilepsy, requiring around the clock supervision. His primary caregivers are his mother, a working single parent, and his 75-year old grandmother. Home Community Options (HCO) Resource Home in Winona provides Koty with supportive services and skill training after school and on Saturdays, and services six days a week during the summer. Services like those provided for Koty and other children and young adults living with their families are already underfunded due to prior cuts.

Additional cuts will jeopardize HCO's ability to continue providing these services, creating a devastating hardship for 43 families and a ripple effect throughout the community. If HCO is no longer able to function, jobs will be lost and working parents will no longer have needed care and reprieve. Opportunities for children and young adults to engage in their communities, socialize with peers, and receive training allowing them to reach their full potential will be significantly diminished.

**Solution:** Let's protect Minnesota's communities, residents and quality of life. We cannot afford to take a cuts-only approach to meeting our state's needs, jeopardizing the independence of people with disabilities. Minnesotans know we need a balanced approach, one that includes raising revenues based on ability to pay, in order to maintain critical state services that support Minnesotans in tough times and invest in our future.

## Spring/Summer Weather

As it is officially Spring, according the calendar, lightning and thunderstorms are sure to follow. The following are important things to remember regarding both **lightning and thunderstorms:**

**If you hear thunder, you are close enough to the storm to be struck by lightning.** Go to a safe shelter immediately, and listen to local radio and TV stations for information and instructions. Make sure your NOAA weather radio is turned on. (A NOAA weather radio provides direct warnings to the public of severe weather and natural and manmade hazards from floods to forest fires to chemical spills. These weather radios can be purchased at discount department stores, electronic retailers and Web sites.)

**If you are in the woods,** take shelter under the shorter trees. If you are **boating or swimming,** get to land and find shelter immediately!

**If you can't find shelter,** go to a low-lying, open place away from trees, poles or metal objects. Squat low to the ground and place your hands on your knees with your head between them. **Do not lie flat on the ground!**

After the storm passes, stay away from storm-damaged areas. Listen to the radio or watch local TV stations for information and instructions.

**If someone is struck by lightning,** he or she does not carry an electrical charge and can be handled safely. Call 911 and give first aid.

**And also remember:** A storm **watch** means a storm is possible in your area. When a watch is issued, listen to local radio and TV stations for additional information. Be alert to changing weather conditions and avoid unnecessary travel.

A storm **warning** means a storm is headed for or is already in your area. When a storm warning is issued safety experts recommend that you stay indoors; it's the best place to protect yourself.

## Inside This Issue:

Employee Spotlight	2
Schedule of Classes	2
Quote of the Month	2
May Calendar	2
Need STH Hours?	2
Position Available	2
Community Events	3
Referral Bonus	3
Access Info	3

## Need STH Hours?

If you need STH hours to meet your job requirements, our nurse has put together informational materials that you can read. It includes a short quiz and you will receive a completion certificate to include with your timesheet to get the STH credit. See HR or Sheila Lentz, our Agency RN if you have any questions.

## Quote of the Month

"It was an ideal spring day, a light blue sky, flecked with little fleecy white clouds drifting across from west to east. The sun was shining very brightly, and yet there was an exhilarating nip in the air, which set an edge to a man's energy."

~ Sir Arthur Conan Doyle

## Schedule of Classes

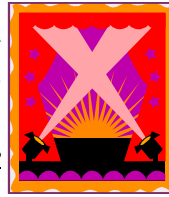
- Medication Administration Classes are currently scheduled for 9:00 am on Tuesday, May 10th and Wednesday, May 25th at the Access office.
- TI (Therapeutic Intervention) classes are currently scheduled for every other Wednesday in May from 1pm–3pm. Classes are on May 4th, and 18th, as well as June 1st. All classes are held at the Moorhead Library, unless otherwise noted.
- Red Cross CPR and First-Aid class dates for May through August are posted on our Access bulletin board in the office. Please check the sign-up sheets for availability. Remember to sign up for these classes on the bulletin boards in the HR Department and Access will register you.

## Employee Spotlight

Access would like to recognize our employees who have reached annual milestones.

We are very proud of all our staff and especially congratulate those listed below!

Those celebrating **one year** service this month are:  
Direct Care Staff— Lauren Sager and Sonda Sauers.



**Two years** service: Direct Care Staff— Danielle Lehnen.

**Five years** service: Direct Care Staff— Andrew Shipley.

**Twenty-two years** service: Juelie Hermann!!! **Congratulations Juelie!!**

## Position Available

We currently have a position open for an **Accounting Assistant (PT)**:

- Will perform general bookkeeping and administrative duties.
- Requires a bachelor's degree in a business financial field or an AA degree in related fields with a minimum of two years experience.
- Requires knowledge of financial computer programs such as QuickBooks and Microsoft Excel.
- Accounts payable and accounts receivable.
- Must have strong communication and organizational skills.

See our website [www.accessrrv.org](http://www.accessrrv.org) or the Access Bulletin Board for more information. If you have questions on the position you may call the Human Resource Department at Access.

## May 2011

Sun	Mon	Tue	Wed	Thu	Fri	Sat
1 <b>MAYDAY</b>	2	3 <b>Expense Reports Due</b>	4 TI Class- Mhd. Library 1-3pm	5	6	7
8	9 <b>Timesheets due by noon</b>	10 Med Admin Class 9am	11	12	13 <b>Payday</b>	14
15	16 <b>Expense Reports Paid</b>	17	18 TI Class- Mhd. Library 1-3pm	19	20	21
22	23 <b>Timesheets due by noon</b>	24	25 Med Admin Class 9am	26	27 <b>Payday</b>	28
29	30 <b>Memorial Day</b> 	31				

## Referral Bonus



### Do you need cash in May?

\*\* We have two easy steps to \$50.00\*\*

\*Refer a friend to fill out an application and have them put your name under "Referral Source" – \$25!

NOTE: In order to receive \$50.00, your friend NEEDS to put your name on the application and it's for the full two-step process. (If they complete the application but are not hired, you will receive \$25.00 only if your friend meets \*requirements\* of position.)

Requirements for bonus: Schedule open for evenings and weekends.

\*If your friend is hired, you will receive another \$25!

If you have any questions please see the Human Resource Department.

## Community Events

The **Arc Dance** in May is on Monday the 9th from 7:15-8:15 pm at Ellen Hopkins School in Moorhead.

The **Moorhead Public Library** is busy with activities in May.

- **Teen Computer Nights** are 4:00-8:00 pm every Tuesday in May. 
- Wed. May 4th is "**May the 4th Be With You**" from 6:00-8:00 pm.
- Saturday the 7th is **Easy Homemade Yogurt** at 2:00 pm.
- Monday, May 9th is **Teen Art** starting at 6:30 pm. 

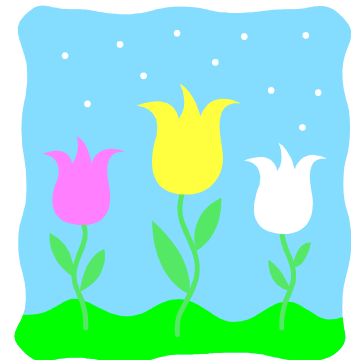


May 19th-21st is the **Fargo Marathon**. Visit [www.fargomarathon.com](http://www.fargomarathon.com) or call 1-888-RUN-FARGO for more information.



### MCLC Information:

- The **Spring hours** at the MCLC are Monday through Thursday from 5:00-8:00 pm.
- Check the newest board games at the **FREE and FUN MCLC**. Bring your clients and enjoy the crafts, board games, Wii games and more!!
- **MCLC Arts and Crafts** sessions will be held on Friday May 13th and 27th from 5:00-6:00 pm.
- The MCLC is for **all** of our clients and their staff, no matter what age. It is a way to get out, see friends, do homework, or make a craft.



**Check us out online at [www.accessrrv.org](http://www.accessrrv.org)**

### MISSION

*The mission of Access of the Red River Valley is to provide care and to support children and adults in their right to lead dignified, independent lives in the community.*

For 26 years Access of the Red River Valley has provided quality care and compassionate support to assist people with disabilities realize their full potential. Access is known throughout the community for our professional full time and part-time staff members who share in the Access mission and make a lifetime of impact.



403 Center Ave., Suite 512  
Moorhead, MN 56560

Phone: 1-218-233-3991  
Fax: 1-218-233-2577

### Access Directors:

- Executive Director: Kathy Potter, CPA
- Business Manager: Diane K. Hill
- Services Director: Bill Smith
- Human Resource Manager: Krista Svobodny